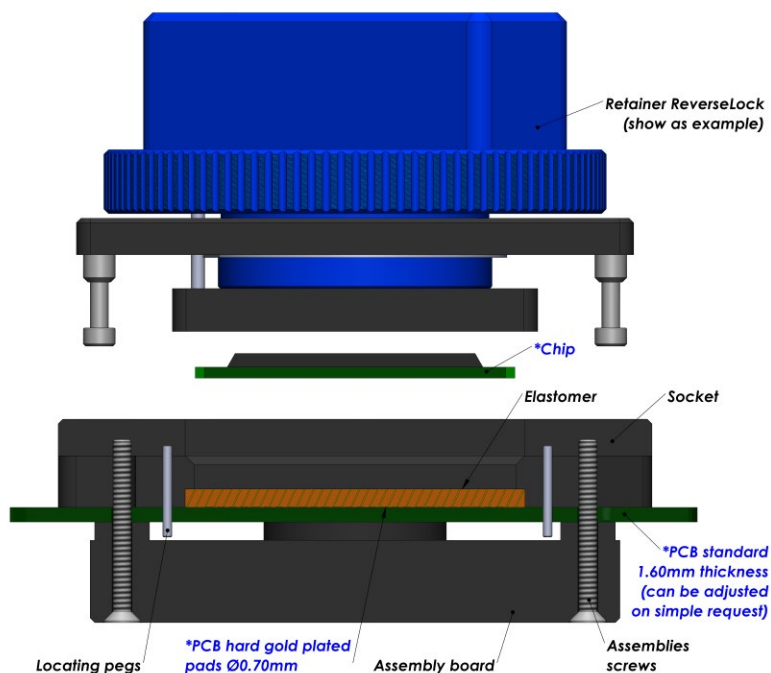
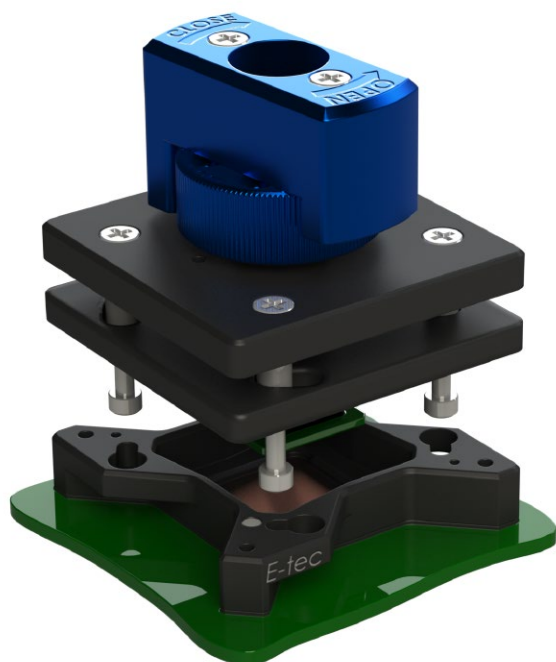
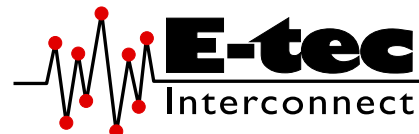


# Elastomer Solderless Compression Test Socket

For LGA / QFN / MLF / MLP / LCC Package

1.27 mm pitch (from 1.27 mm upwards)



## E-tec Interconnect AG is the world leading Test socket manufacturer

The Elastomer Solderless compression Test Sockets are ideal technical solution for good signal integrity with low signal loss. The sockets are available for any chip size and pitch and are attached with 2, 4 or 8 screws to the PCB. The socket outline will be kept to a minimum and special clearances can be offered to avoid components on the PCB.

SMT and thru-hole sockets are available in certain pitches (contact factory for availability first) with these elastomer interposers to allow using this high frequency interposer on PCB's which have already been laid out for SMT or thru-hole sockets. We aim to solve your requirements. Please note, we will always request the chip data to ensure we offer a compatible socket.

| Contacts Specifications |                 |            |            |
|-------------------------|-----------------|------------|------------|
| Contact type code       | E1              | E2         | E3         |
| Application             | High Frequency  |            |            |
| Mounting                | Solderless      | Solderless | Solderless |
| Bandwidth (GHz@-1dB)    | 20 GHz          | 38 GHz     | 30 GHz     |
| Contact resistance      | 30 mOhm         |            |            |
| Chip contact tip shape  | Gold Wire       |            |            |
| PCB tip shape           | Gold Wire       |            |            |
| Force                   | 20 gr to 50 gr  |            |            |
| Current rating          | 3 A             |            |            |
| Capacitance pF          | 0.26 pF         | 0.12 pF    | 0.10 pF    |
| Inductance nH           | 0.52 nH         | 0.35 nH    | 0.18 nH    |
| Impedance Ohms          | 44.8 Ω          | 44.4 Ω     | 42.1 Ω     |
| Temperature range       | -40°C to +125°C |            |            |
| Mating cycles           | 1 K             |            |            |

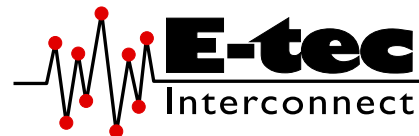
More on the next page



# Elastomer Solderless Compression Test Socket

For LGA / QFN / MLF / MLP / LCC Package

1.27 mm pitch (from 1.27 mm upwards)

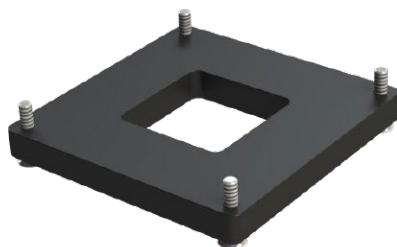


## Standard assembly boards

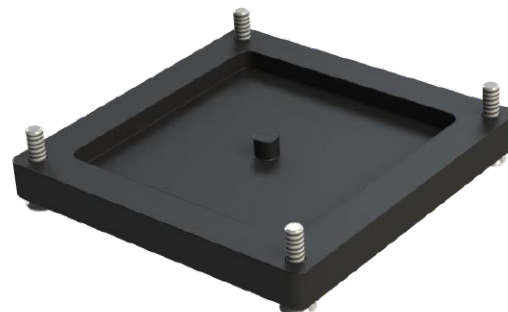
Small Chip size



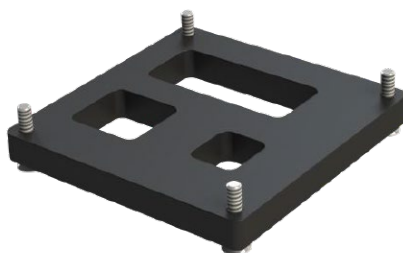
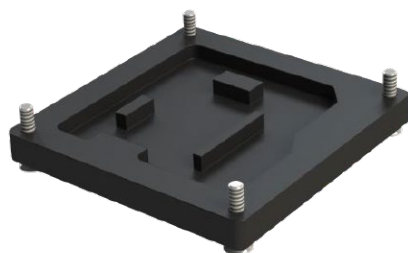
Medium Chip size



Large Chip size



## Custom assembly boards



## How to order

**LE # #### -12E# - ##### 55L #**

|  |  |   |   |  |
|--|--|---|---|--|
| <p><b>Shape of tip</b><br/>E : Elastomer</p>   | <p><b>Nbr of contacts</b><br/>Depends on ballcount of chip</p> | <p><b>Contact type</b><br/>E1 : High Frequency 20 GHz<br/>E2 : High Frequency 38 GHz<br/>E3 : High Frequency 30 GHz</p> | <p><b>Plating</b><br/>55L: Gold + Locating pegs</p> | <p><b>Option code</b> (see page 16-19)<br/>M : Multi frames<br/>U : Multi packages<br/>C : Converter plate<br/>S : Custom opening slot<br/>H : Heatsink<br/>F : Fan + Heatsink<br/>W : Transparent lid<br/>I : Steel retention lid<br/>B : Aluminium retention lid<br/>G : Handling button</p> |
| <p><b>Retention frame type (Lid)</b> (see page 12-15)</p> <p>W: TwistLock<br/>F : FastLock<br/>B : SpringLock<br/>H : Open Clamshell Alu (&lt;200 contacts)<br/>J : Clamshell Alu (&gt;200 contacts)<br/>L : Open Lever Clamshell Alu (&gt;200 contacts)</p> <p>S : ScrewLock<br/>Q : Open QuickLock (&lt;200 contacts)<br/>D : QuickLock (&gt;200 contacts)<br/>M : Injection Molded ClamShell<br/>R : ReverseLock<br/>T : SlimLock</p> |  | <p><b>Grid code / Config. code</b><br/>Will be given by the factory after receipt of the chip datasheet</p>             |   |  |