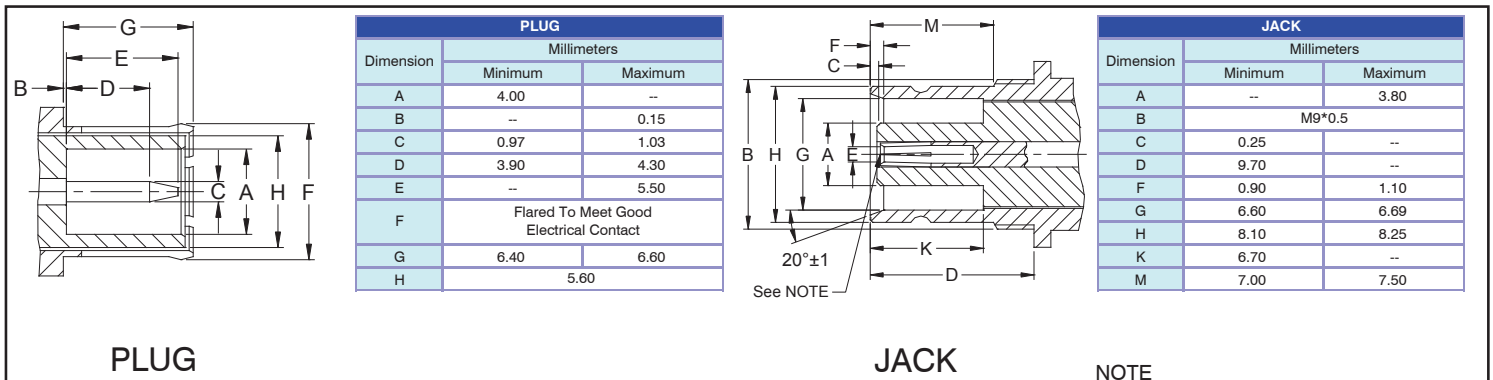


RF Connectors

1.6/5.6 Series



1.6/5.6 coaxial connectors with 75Ω impedance are generally designed for radio and digital signal transmissions. These 1.6/5.6 connectors have become popular in modern telecommunication equipments.



Dimension	PLUG Millimeters	
	Minimum	Maximum
A	4.00	--
B	--	0.15
C	0.97	1.03
D	3.90	4.30
E	--	5.50
F	Flared To Meet Good Electrical Contact	
G	6.40	6.60
H	5.60	

Dimension	JACK Millimeters	
	Minimum	Maximum
A	--	3.80
B	M9*0.5	
C	0.25	--
D	9.70	--
F	0.90	1.10
G	6.60	6.69
H	8.10	8.25
K	6.70	--
M	7.00	7.50

PLUG

JACK

NOTE

In order to meet the VSWR and CR values as specified, the inner hole diameter needs to be mated with a 0.97/1.03mm dia. pin.

Electrical		
Impedance		75 Ω
Frequency Range		0 - 1 GHz
Working Voltage		335 V rms max.
Dielectric Withstanding Voltage		1000 V rms min.
VSWR	Straight	1.3 max.
	Right Angle	1.5 max.
Contact Resistance	Center Contact	4 mΩ max.
	Outer Contact	2 mΩ max.
Insulator Resistance		1000 MΩ min.

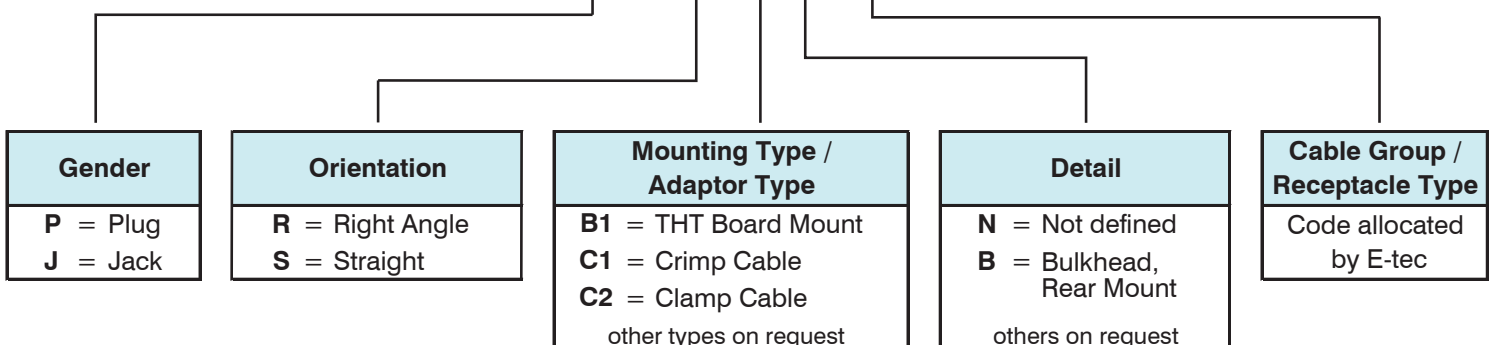
Material		
Parts Name	Material	Finish
Body, Metal Parts	Brass per QQ-B-626	Nickel 1.75μm (70 μ")
Outer Contact(Plug)	Phosphor Bronze per QQ-B-750	Gold 0.07μm (3 μ")
Center Contacts	Male: Brass per QQ-B-626	Gold 0.07μm (3 μ")
	Female: Beryllium copper per QQ-C-530	Gold 0.07μm (3 μ")
Insulators	Teflon	None
Crimp Ferrules	Annealed Brass	Nickel 1.75μm (70 μ")

NOTE: Other materials and platings are available on request.

Mechanical	
Engagement / Disengagement Force	27 N max.
Durability(Mating)	500 cycles min. (for Beryllium copper female contact only)

How to order

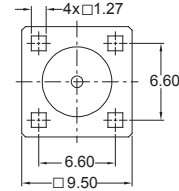
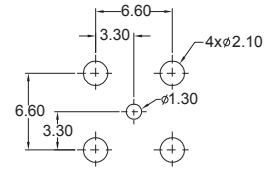
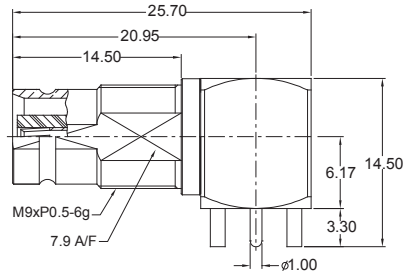
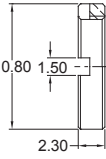
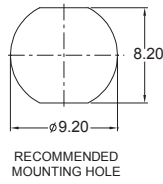
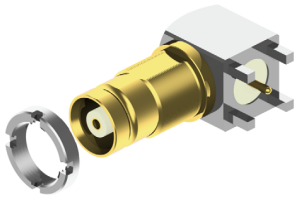
RF X - 16 X - XX X 7 xx - N5



RF Connectors 1.6/5.6 Series

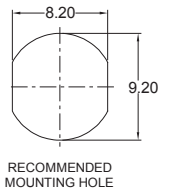
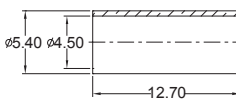
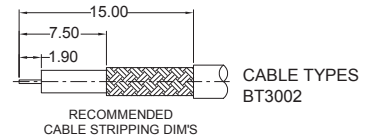
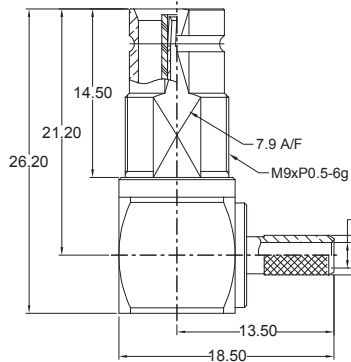
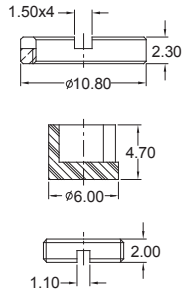
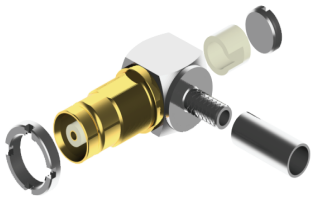


R/A THT JACK



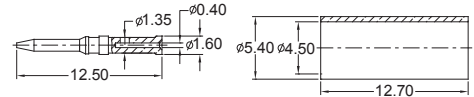
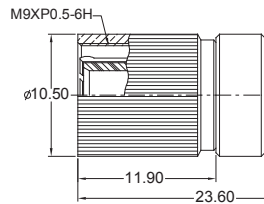
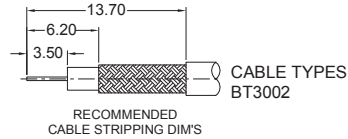
Order Code
RFJ-16R-B1B792-N5

R/A CRIMP JACK



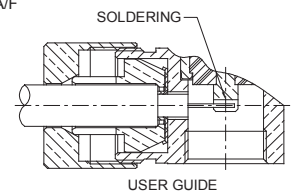
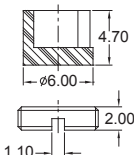
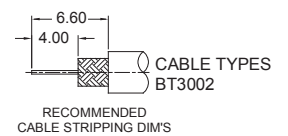
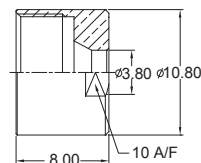
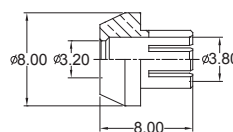
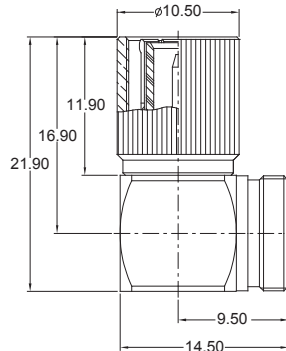
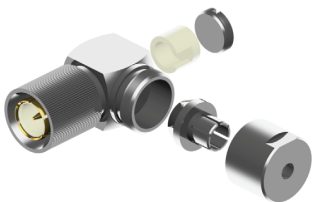
Order Code
RFJ-16R-C1B733-N5

CRIMP PLUG



Order Code
RFP-16S-C1N733-N5

R/A CLAMP PLUG



Order Code
RFP-16R-C2N733-N5

Other 1.6/5.6 types available on request