

01

RF/COAX CONNECTORS

E-tec Interconnect AG Switzerland



E-tec Interconnect Asia Ltd.

The **E-tec** Switzerland factory was founded in 1973 for the production of precision pins for the watch industry. As of the 1980's the company expanded it's business into manufacturing of precision pin connectors for the electronics industry (IC-Sockets, Board-to-Board Connectors, etc.)

In 1993 **E-tec** set-up it's own operations in Taiwan in order to enhance the product range with stamped pin products (PLCC, Pin headers, Female headers, D-Sub's, Switches, etc.). In 2001 **E-tec** transferred certain labor intensive productions to its new production plant in Mainland China.

With over 35 years experience in connector manufacturing, **E-tec** has set-up it's own sales network in Europe & Asia, as well as established distributors and representatives in most countries around the world.

E-tec offers flexibility for custom specific products and delivers standard and custom products starting from 0.30mm pitch upwards. We offer short delivery times from prototype to large volume productions. Thanks to our in-house product development department and production sites in Switzerland, Taiwan and Mainland China we aim to offer a solution to all your problems.

As a fully approved ISO 9001:2008 manufacturer, quality assurance is an essential part of our production process, since our main objective is to offer products which correspond to the highest quality standards.

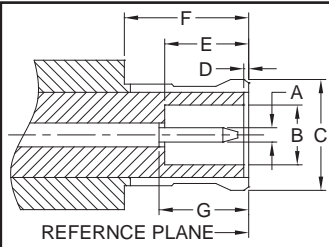
Part-Number	Type	Page
RFJ-16R-B1B792-N5	1.6/5.6 R/A THT JACK	11 & 12
RFJ-16R-C1B733-N5	1.6/5.6 R/A CRIMP JACK	11 & 12
RFJ-MCR-B1N592-58	MCX R/A THT JACK	1 & 2
RFJ-MCS-B1N592-58	MCX STRAIGHT THT JACK	1 & 2
RFJ-MCS-C1N502-58	MCX CRIMP JACK	1 & 2
RFJ-MMS-B1N592-58	MMCX STRAIGHT THT JACK	3 & 4
RFJ-MMS-B2L592-58	MMCX R/A EMBEDDED SMT JACK	3 & 4
RFJ-MMS-C1N502-58	MMCX CRIMP JACK	3 & 4
RFJ-SAR-B1N592-58	SMA R/A THT JACK	5 & 6
RFJ-SAS-B3L592-58	SMA SMT EDGE MOUNT JACK	5 & 6
RFJ-SAS-C1N502-58	SMA CRIMP JACK	5 & 6
RFJ-SAS-P1A591-58	SMA PANEL JACK	5 & 6
RFJ-SBS-B1N592-58	SMB STRAIGHT THT JACK	9 & 10
RFJ-SBS-C1N502-58	SMB CRIMP JACK	9 & 10
RFJ-SBS-P1B591-58	SMB PANEL JACK	9 & 10
RFJ-SRR-B1N592-58	SMA Reverse R/A THT JACK	7 & 8
RFJ-SRS-B1N592-58	SMA Reverse STRAIGHT THT JACK	7 & 8
RFJ-SRS-C1N502-58	SMA Reverse CRIMP JACK	7 & 8
RFP-16R-C2N733-N5	1.6/5.6 R/A CLAMP PLUG	11 & 12
RFP-16S-C1N733-N5	1.6/5.6 CRIMP PLUG	11 & 12
RFP-MCR-C1N502-58	MCX R/A CRIMP PLUG	1 & 2
RFP-MCS-C1N502-58	MCX CRIMP PLUG	1 & 2
RFP-MMR-C1N502-58	MMXC R/A CRIMP PLUG	3 & 4
RFP-MMS-B1N592-58	MMXC STRAIGHT THT PLUG	3 & 4
RFP-SAS-C1N502-58	SMA CRIMP PLUG	5 & 6
RFP-SBR-B1N592-58	SMB R/A THT PLUG	9 & 10
RFP-SBS-C1N502-58	SMB CRIMP PLUG	9 & 10
RFP-SRR-C1N502-58	SMA Reverse R/A CRIMP PLUG	7 & 8
RFP-SRS-C1N502-58	SMA Reverse CRIMP PLUG	7 & 8

RF Connectors

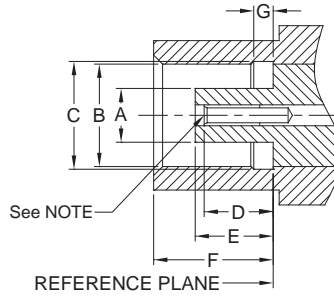
MCX Series



These MCX miniature snap-on connectors with 50Ω impedance operate in a frequency range up to 6 GHz. The MCX series is an ideal solution for GPS, wireless communications and test measurement applications.



Dimension	PLUG	
	Millimeters	
	Minimum	Maximum
A	0.48	0.53
B	2.00	2.07
C	3.66	3.76
D	0.00	0.30
E	2.81	3.20
F	4.16	--
G	2.81	3.20



Dimension	JACK	
	Millimeters	
	Minimum	Maximum
A	1.80	1.97
B	3.43	3.48
C	3.61	3.75
D	2.31	2.79
E	2.61	2.79
F	4.00	4.12
G	0.75	0.85

PLUG

JACK

NOTE

In order to meet the VSWR and CR values as specified, the inner hole diameter needs to be mated with a 0.48/0.53mm dia. pin.

Electrical		
Impedance	50 Ω	
Frequency Range	0 - 6 GHz	
Working Voltage	335 V rms max.	
Dielectric Withstanding Voltage	1000 V rms min.	
VSWR	Straight	1.3 max.
	Right Angle	1.5 max.
Contact Resistance	Center Contact	5 mΩ max.
	Outer Contact	2.5 mΩ max.
Insulator Resistance	1000 MΩ min.	

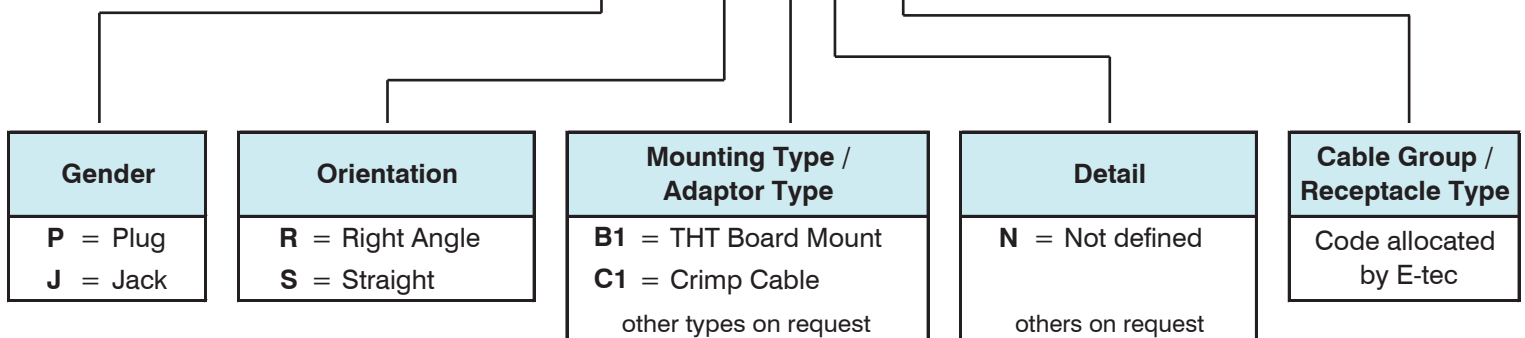
Material		
Parts Name	Material	Finish
Body, Metal Parts	Brass per QQ-B-626	Gold 0.07μm (3 μ")
Center Contacts	Male: Brass per QQ-B-626	Gold 0.75μm (30 μ")
	Female: Beryllium copper per QQ-C-530	Gold 0.75μm (30 μ")
Insulators	Teflon	None
Outer Contact of Plug	Beryllium copper per QQ-C-530	Gold 0.07μm (3 μ")
Crimp Ferrules	Annealed Brass	Gold 0.07μm (3 μ")

NOTE: Other materials and platings are available on request.

Mechanical & Environmental	
Engagement torque	15 N max.
Disengagement torque	20 N max.
Contact Retention	18 N min.
Durability(Mating)	500 cycles min. (for Beryllium copper female contact only)
Temperature Range	-65°C to +155°C
Vibration	3 cycles, 3 opposite directions, 10-150 Hz, 10-60 Hz:0.75mm/.03", 60-150 Hz 10G
Temperature Shock	MIL-STD-202 Method 107
Humidity	MIL-STD-202 Method 103, Condition. B.
Mechanical Shock	MIL-STD-202 Method 213, Condition. B.

How to order

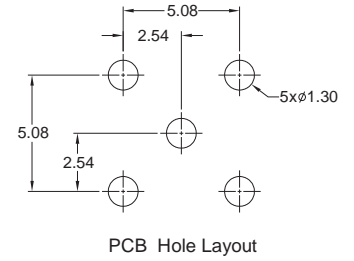
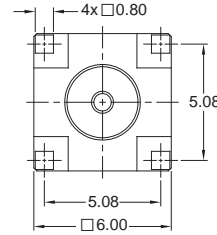
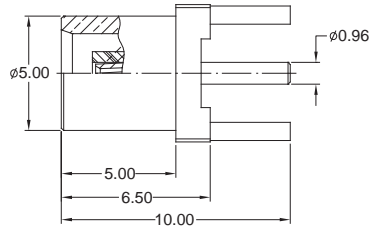
RF X - MC X - XX X 5 xx - 58



RF Connectors MCX Series

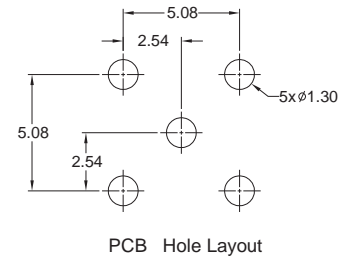
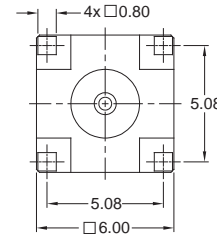
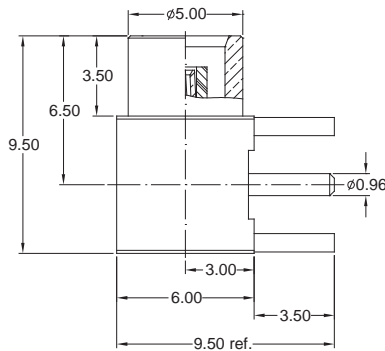
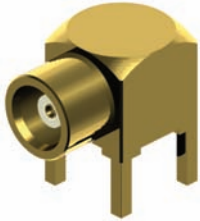


STRAIGHT THT JACK



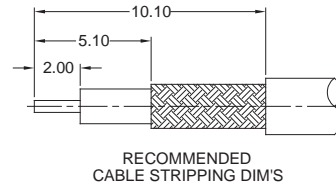
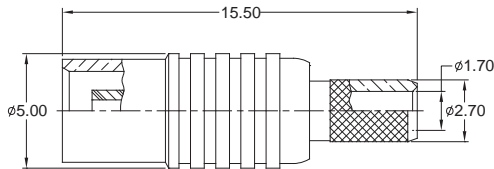
Order Code
RFJ-MCS-B1N592-58

R/A THT JACK



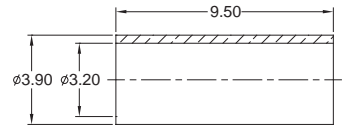
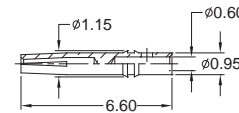
Order Code
RFJ-MCR-B1N592-58

CRIMP JACK



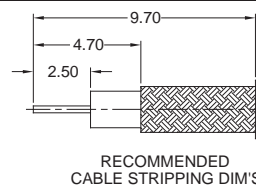
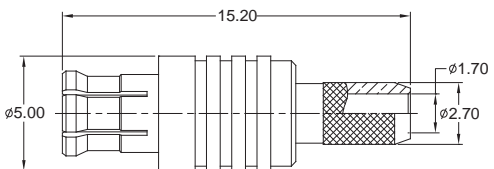
CABLE TYPES
RG-174/U, 188A/U, 316/U

RECOMMENDED
CABLE STRIPPING DIM'S



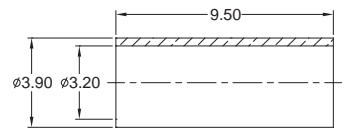
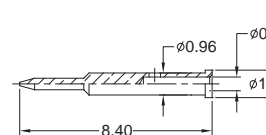
Order Code
RFJ-MCS-C1N502-58

CRIMP PLUG



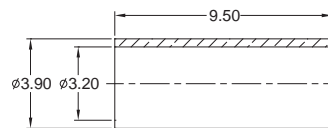
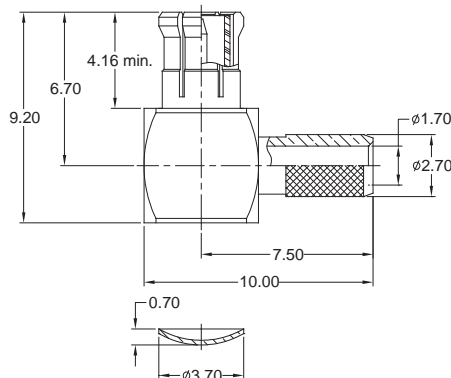
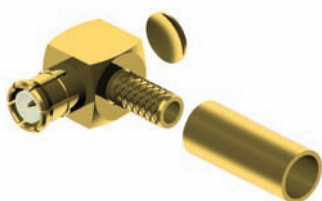
CABLE TYPES
RG-174/U, 188A/U, 316/U

RECOMMENDED
CABLE STRIPPING DIM'S

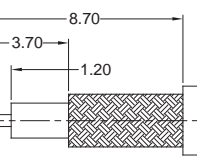


Order Code
RFP-MCS-C1N502-58

R/A CRIMP PLUG



CABLE TYPES
RG-174/U, 188A/U, 316/U



RECOMMENDED
CABLE STRIPPING DIM'S

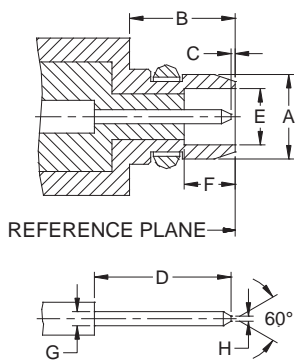
Order Code
RFP-MCR-C1N502-58

Other MCX types available on request

RF Connectors MMCX Series

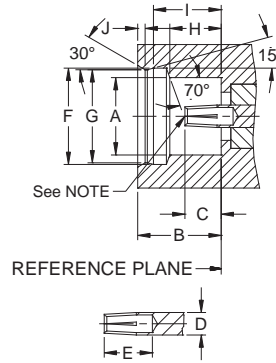


MMCX series with 50Ω impedance offer the smallest dimensions for high density applications. The MMCX connectors work a frequency range up to 6 GHz and they can be offered in thru-hole and surface mount technology for flexible and semi-rigid coaxial cable interconnection systems.



PLUG

Dimension	PLUG Millimeters	
	Minimum	Maximum
A	--	2.40
B	2.70	--
C	0.00	0.25
D	--	3.15
E	1.58	1.62
F	1.45	--
G	0.38	0.42
H	--	0.20



JACK

Dimension	JACK Millimeters	
	Minimum	Maximum
A	2.41	--
B	2.60	--
C	0.90	1.20
D	0.68	0.72
E	1.40	--
F	3.00	3.04
G	2.87	2.90
H	1.57	1.63
I	2.30	2.34
J	--	0.23

NOTE

In order to meet the VSWR and CR values as specified, the inner hole diameter needs to be mated with a 0.38/0.42mm dia. pin.

Electrical

Impedance	50 Ω				
Frequency Range	0 - 6 GHz				
Working Voltage	170 V rms max.				
Dielectric Withstanding Voltage	500 V rms min.				
VSWR	<table border="1"> <tr> <td>Straight</td> <td>1.3 max.</td> </tr> <tr> <td>Right Angle</td> <td>1.5 max.</td> </tr> </table>	Straight	1.3 max.	Right Angle	1.5 max.
Straight	1.3 max.				
Right Angle	1.5 max.				
Contact Resistance	<table border="1"> <tr> <td>Center Contact</td> <td>5 mΩ max.</td> </tr> <tr> <td>Outer Contact</td> <td>2.5 mΩ max.</td> </tr> </table>	Center Contact	5 mΩ max.	Outer Contact	2.5 mΩ max.
Center Contact	5 mΩ max.				
Outer Contact	2.5 mΩ max.				
Insulator Resistance	1000 MΩ min.				

Material

Parts Name	Material	Finish
Body, Metal Parts	Brass per QQ-B-626	Gold 0.07μm (3 μ")
Center Contacts	Male: Brass per QQ-B-626	Gold 0.75μm (30 μ")
	Female: Beryllium copper per QQ-C-530	Gold 0.75μm (30 μ")
Insulators	Teflon	None
Crimp Ferrules	Annealed Brass	Gold 0.07μm (3 μ")

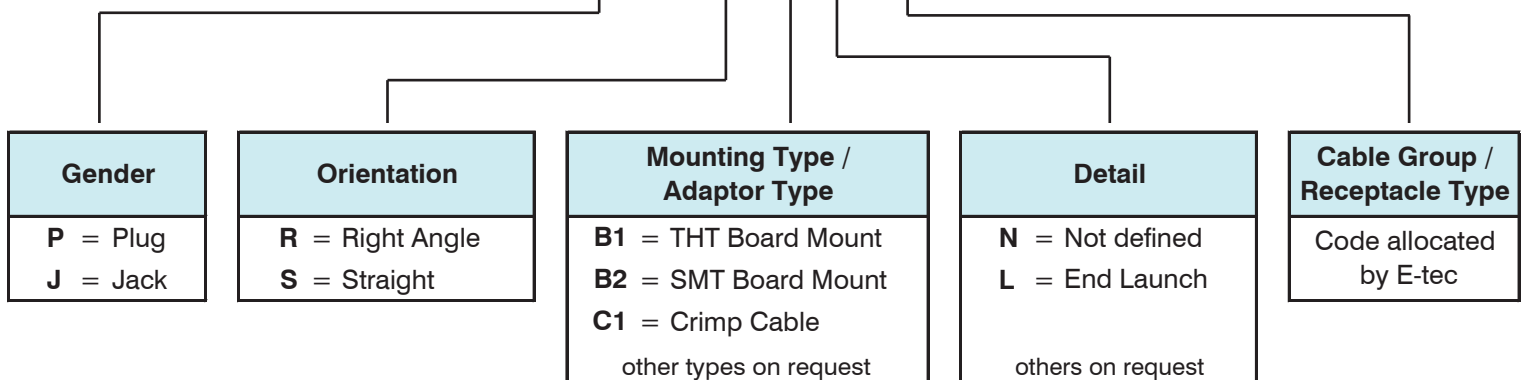
NOTE: Other materials and platings are available on request.

Mechanical & Environmental

Engagement Force	15 N max.
Disengagement Force	6~15 N max.
Contact Retention	11 N min.
Durability(Mating)	500 cycles min.
Temperature Range	-65°C to +155°C
Vibration	3 cycle, 3 opposite directions, 10-150 Hz, 10-60 Hz:0.75mm/.03", 60-150 Hz 10G
Temperature Shock	MIL-STD-202 Method 107
Humidity	MIL-STD-202 Method 103, Condition. B.
Mechanical Shock	MIL-STD-202 Method 213, Condition. B.

How to order

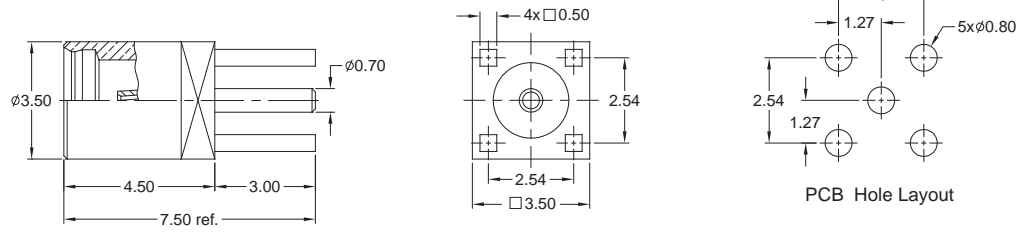
RF X - MM X - XX X 5 xx - 58



RF Connectors MMCX Series

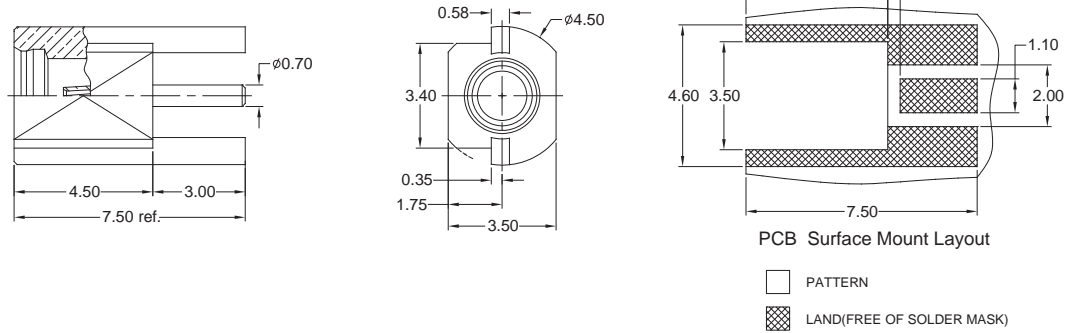


STRAIGHT THT JACK



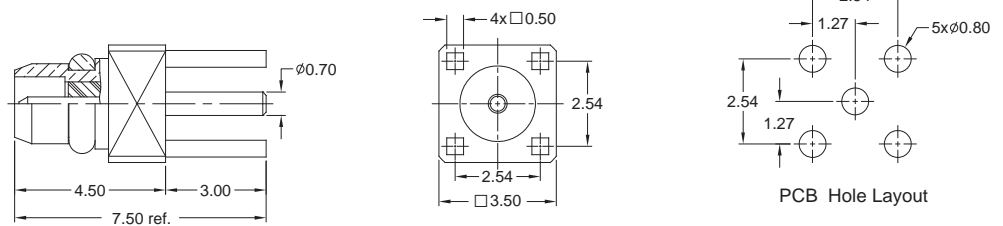
Order Code
RFJ-MMS-B1N592-58

R/A EMBEDDED SMT JACK



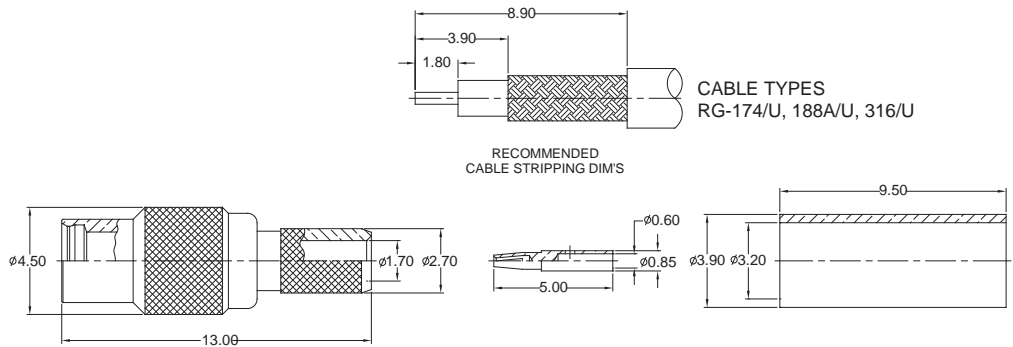
Order Code
RFJ-MMS-B2L592-58

STRAIGHT THT PLUG



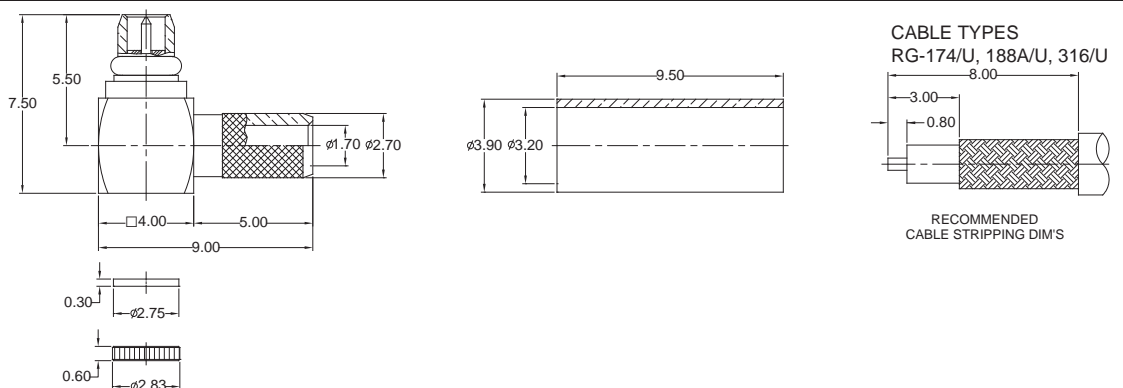
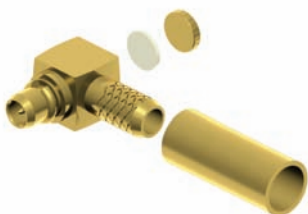
Order Code
RFP-MMS-B1N592-58

CRIMP JACK



Order Code
RFJ-MMS-C1N502-58

R/A CRIMP PLUG



Order Code
RFP-MMR-C1N502-58

Other MMCX types available on request

RF Connectors SMA Series



SMA connectors with 50Ω impedance are high precision subminiature devices designed for microwave applications up to 18 GHz. These connectors are produced with brass or high quality stainless steel, which offer excellent durability and mechanical strength.

Dimension	Millimeters	
	Minimum	Maximum
A	6.35	6.73
B	4.53	4.59
C	2.54	3.43
D	0.00	0.25
E	1.91	2.54
F	0.00	0.25
G	0.90	0.94
H	0.00	0.38
J	1.24	1.30

Dimension	Millimeters	
	Minimum	Maximum
A	5.28	5.49
B	4.60	4.67
C	1.88	1.98
D	0.00	0.25
E	0.38	1.14
F	2.92	--
G	0.00	0.25
H	4.32	--
J	1.24	1.30
K	5.54	--

PLUG **JACK**

NOTE
In order to meet the VSWR and CR values as specified, the inner hole diameter needs to be mated with a 0.9/0.94mm dia. pin.

Electrical		
Impedance	50 Ω	
Frequency Range	0 - 12.4 GHz on Flexible cable 0 - 18 GHz on Semi-rigid cable	
Working Voltage	RG-178: 170 V rms max. RG-316, .085": 250 V rms max. RG-142, .141": 335 V rms max.	
Dielectric Withstanding Voltage	RG-178: 500 V rms min. RG-316, .085": 750 V rms min. RG-142, .141": 1000 V rms min.	
VSWR	Straight	1.3 max.
	Right Angle	1.5 max.
Contact Resistance	Center Contact	6 mΩ max.
	Outer Contact	2 mΩ max.
Insulator Resistance	5000 MΩ min.	

Material		
Parts Name	Material	Finish
Body, Metal Parts	Brass per QQ-B-626	Gold 0.07μm (3 μ")
Center Contacts	Male: Brass per QQ-B-626 Female: Beryllium copper per QQ-C-530	Gold 0.75μm (30 μ")
Insulators	Teflon	None
Crimp Ferrules	Annealed Brass	Gold 0.07μm (3 μ")
Crimp Gaskets	Silicone rubber	None

NOTE: Other materials and platings are available on request.

Mechanical & Environmental	
Engagement Force	22 cNm max.
Disengagement Force	22 cNm max.
Coupling Nut Retention	267 N min.
Coupling Proof Torque	170 cNm min.
Contact Retention	27 N min.
Durability (Mating)	500 cycles min. (for Beryllium copper female contact only)
Temperature Range	-65°C to +155°C
Vibration	MIL-STD-202 Method 204 Test Cond. B.
Salt Spray	MIL-STD-202 Method 101 Test Cond. B.
Thermal Shock	MIL-STD-202 Method 107 Test Cond. B.

How to order

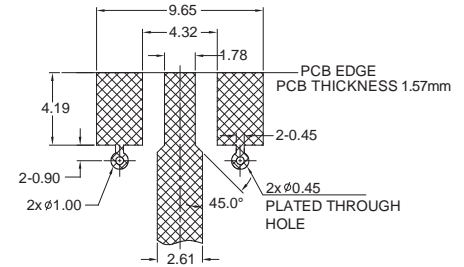
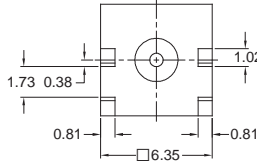
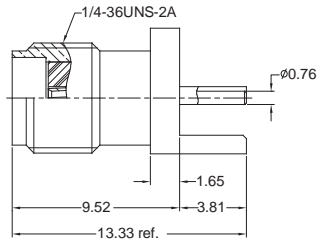
RF X - SA X - XX X 5 xx - 58

Gender P = Plug J = Jack	Orientation R = Right Angle S = Straight	Mounting Type / Adaptor Type B1 = THT Board Mount B3 = END Launch Board Mount C1 = Crimp Cable P1 = Panel Board Mount other types on request	Detail N = Not defined L = End Launch A = Bulkhead, Front Mount others on request	Cable Group / Receptacle Type Code allocated by E-tec
---	---	--	---	---

RF Connectors SMA Series



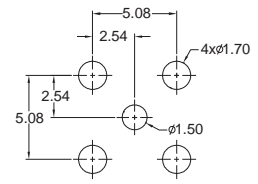
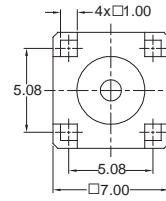
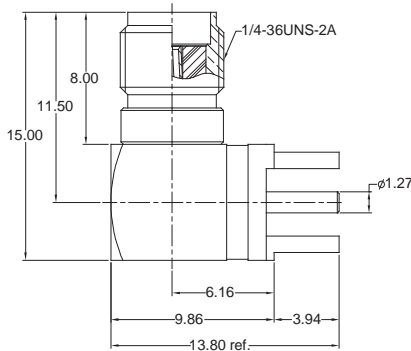
SMT EDGE MOUNT JACK



PCB surface Mount Layout

Order Code
RFJ-SAS-B3L592-58

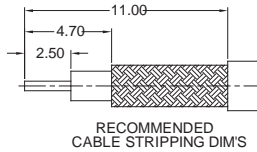
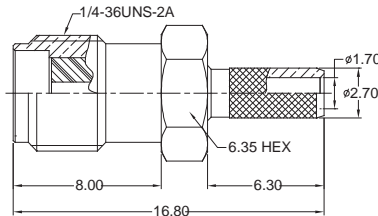
R/A THT JACK



PCB Hole Layout

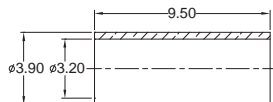
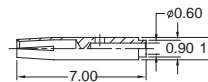
Order Code
RFJ-SAR-B1N592-58

CRIMP JACK



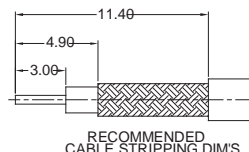
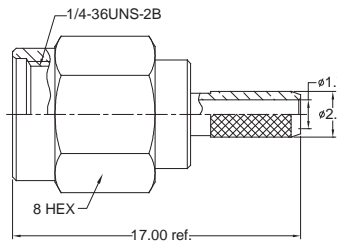
CABLE TYPES
RG-174/U, 188A/U, 316/U, LMR-100

RECOMMENDED
CABLE STRIPPING DIM'S



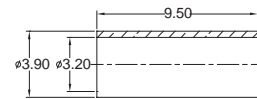
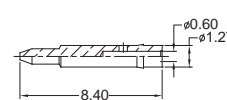
Order Code
RFJ-SAS-C1N502-58

CRIMP PLUG



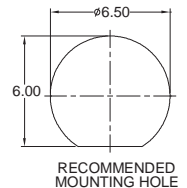
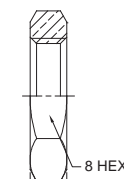
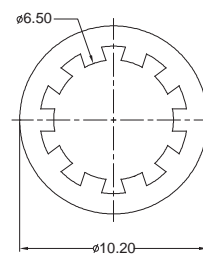
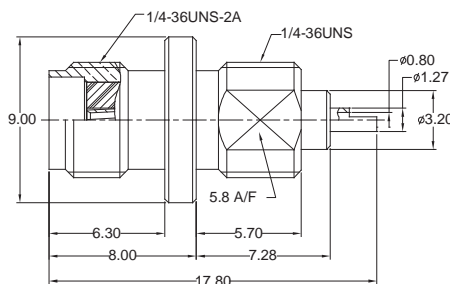
CABLE TYPES
RG-174/U, 188A/U, 316/U, LMR-100

RECOMMENDED
CABLE STRIPPING DIM'S



Order Code
RFP-SAS-C1N502-58

PANEL JACK



Order Code
RFJ-SAS-P1A591-58

Other SMA types available on request

RF Connectors

SMA Reverse Series



SMA Reverse connectors with 50Ω impedance are designed for using in spread spectrum wireless applications which a non-standard interface is needed.

PLUG

Dimension	Millimeters	
	Minimum	Maximum
A	2.54	3.43
B	1.24	1.30
C	4.53	4.59
D	6.35	6.73
E	0.00	0.25
F	0.00	0.25
G	2.92	--

NOTE
In order to meet the VSWR and CR values as specified, the inner hole diameter needs to be mated with a 0.9/0.94mm dia. pin.

JACK

Dimension	Millimeters	
	Minimum	Maximum
A	5.54	--
B	4.32	--
C	0.38	1.14
D	5.28	5.49
E	4.60	4.67
F	0.90	0.94
G	0.00	0.38
H	1.24	1.30
J	0.00	0.25
K	0.00	0.25
L	1.88	1.98

Electrical	
Impedance	50 Ω
Frequency Range	0 - 12.4 GHz on Flexible cable 0 - 18 GHz on Semi-rigid cable
Working Voltage	RG-178: 170 V rms max. RG-316, .085": 250 V rms max. RG-142, .141": 335 V rms max.
Dielectric Withstanding Voltage	RG-178: 500 V rms min. RG-316, .085": 750 V rms min. RG-142, .141": 1000 V rms min.
VSWR	Straight: 1.3 max. Right Angle: 1.5 max.
Contact Resistance	Center Contact: 6 mΩ max. Outer Contact: 2 mΩ max.
Insulator Resistance	5000 MΩ min.

Material		
Parts Name	Material	Finish
Body, Metal Parts	Brass per QQ-B-626	Gold 0.07μm (3 μ")
Center Contacts	Male: Brass per QQ-B-626 Female: Beryllium copper per QQ-C-530	Gold 0.75μm (30 μ") Gold 0.75μm (30 μ")
Insulators	Teflon	None
Crimp Ferrules	Annealed Brass	Gold 0.07μm (3 μ")
Crimp Gaskets	Silicone rubber	None

NOTE: Other materials and platings are available on request.

Mechanical & Environmental	
Engagement Force	22 cNm max.
Disengagement Force	22 cNm max.
Coupling Nut Retention	678 cNm min.
Coupling Proof Torque	170 cNm min.
Contact Retention	68 cNm min.
Durability(Mating)	500 cycles min.
Temperature Range	-65°C to +155°C
Vibration	MIL-STD-202 Method 204 Test Cond. B.
Salt Spray	MIL-STD-202 Method 101 Test Cond. B.
Thermal Shock	MIL-STD-202 Method 107 Test Cond. B.

How to order

RF X - SR X - XX X 5 xx - 58

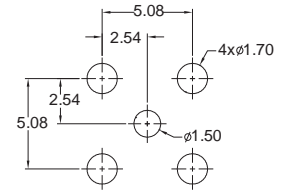
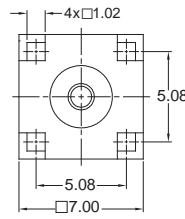
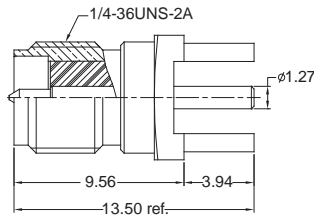
Gender	Orientation	Mounting Type / Adaptor Type	Detail	Cable Group / Receptacle Type
P = Plug J = Jack	R = Right Angle S = Straight	B1 = THT Board Mount C1 = Crimp Cable other types on request	N = Not defined others on request	Code allocated by E-tec

RF Connectors

SMA Reverse Series



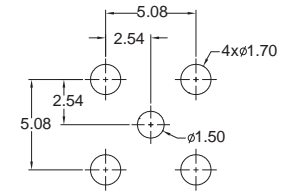
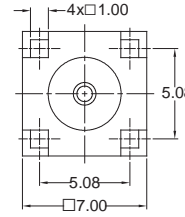
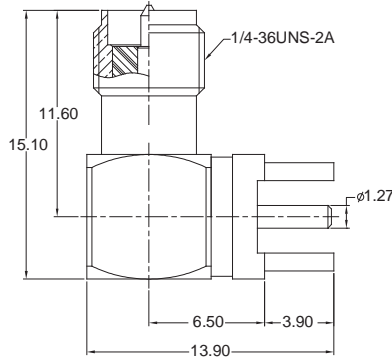
STRAIGHT THT JACK



PCB Hole Layout

Order Code
RFJ-SRS-B1N592-58

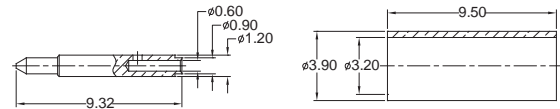
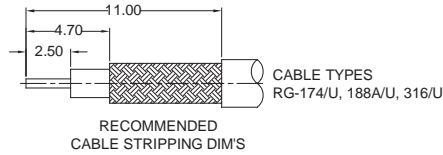
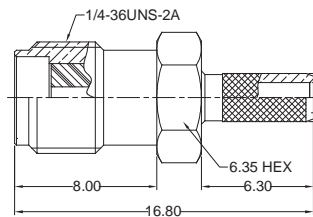
R/A THT JACK



PCB Hole Layout

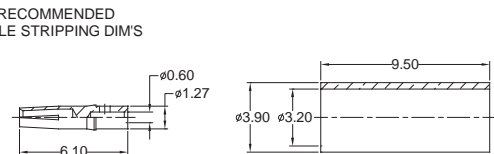
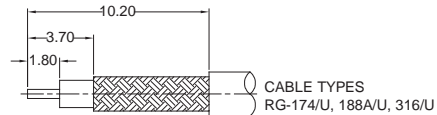
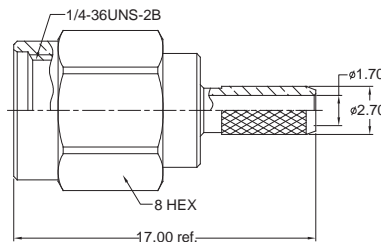
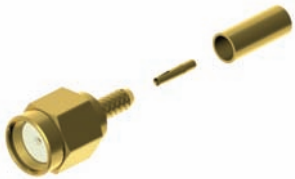
Order Code
RFJ-SRR-B1N592-58

CRIMP JACK



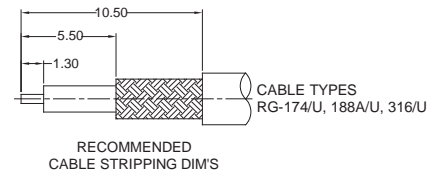
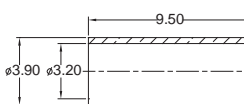
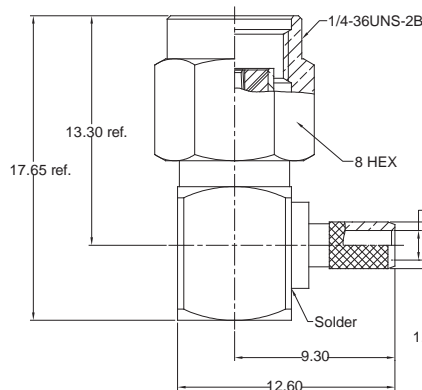
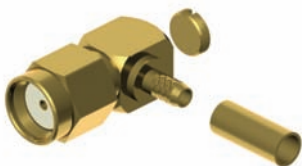
Order Code
RFJ-SRS-C1N502-58

CRIMP PLUG



Order Code
RFP-SRS-C1N502-58

R/A CRIMP PLUG



Order Code
RFP-SRR-C1N502-58

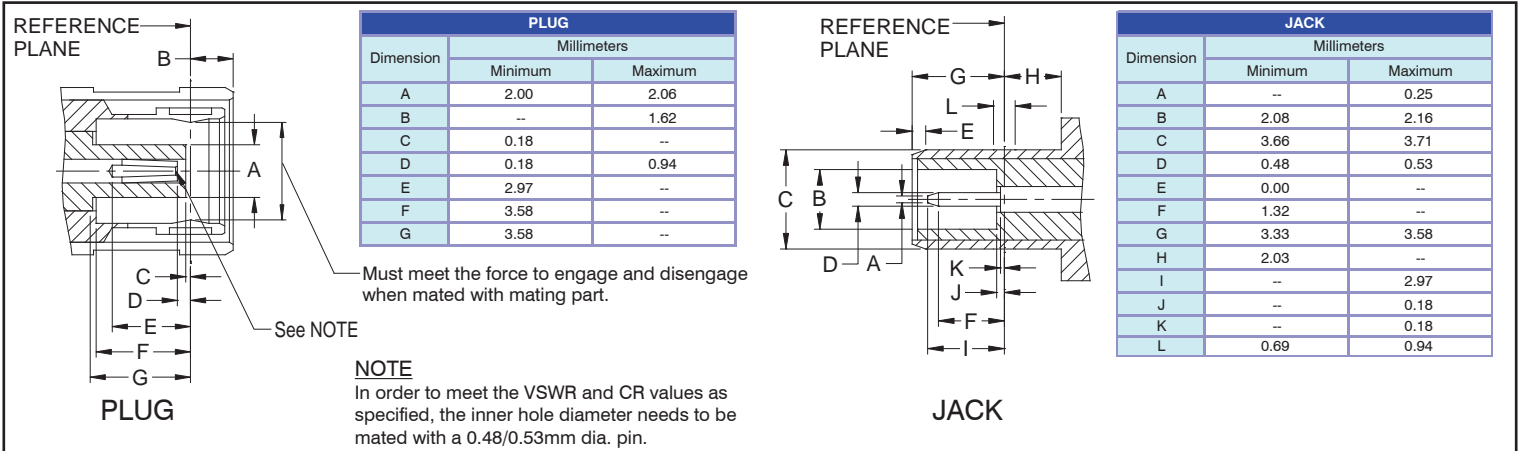
Other SMA Reverse types available on request

RF Connectors

SMB Series



SMB connectors with 50Ω impedance are subminiature devices designed for repeatable electrical performance up to 4 GHz. These SMB connectors offer a simple open/close snap-on coupling feature and which have become very popular in telecommunications, test equipments and instrumentation.



Electrical	
Impedance	50 Ω
Frequency Range	0 - 4 GHz
Working Voltage	RG-178: 250 V rms max.
	RG-316, .085": 335 V rms max.
Dielectric Withstanding Voltage	RG-178: 500 V rms min.
	RG-316, .085": 1000 V rms min.
VSWR	Straight
	Right Angle
Contact Resistance	Center Contact
	Outer Contact
Insulator Resistance	1000 MΩ min.

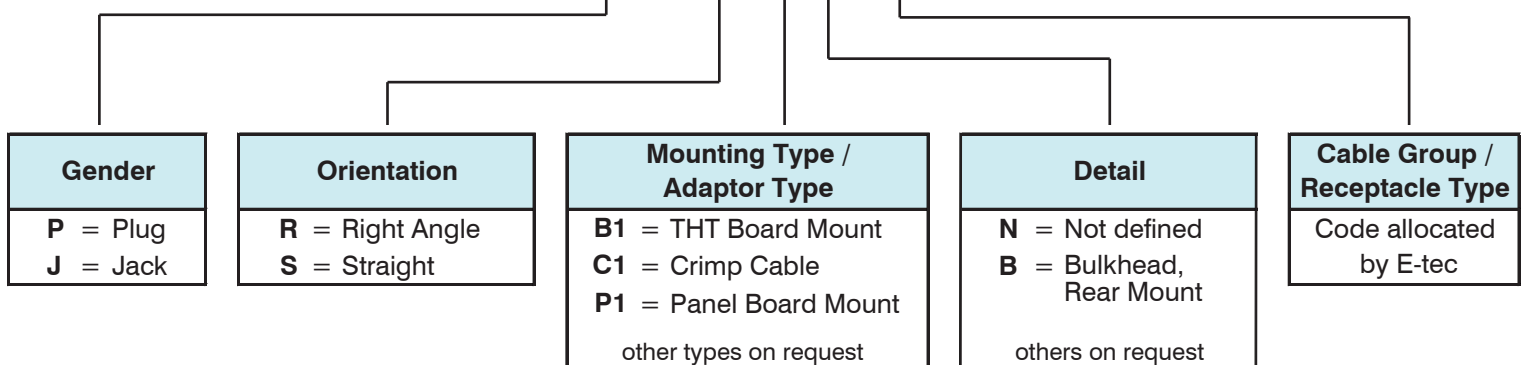
Material		
Parts Name	Material	Finish
Body, Metal Parts	Brass per QQ-B-626	Gold 0.07μm (3 μ")
Center Contacts	Male: Brass per QQ-B-626	Gold 0.75μm (30 μ")
	Female: Beryllium copper per QQ-C-530	Gold 0.75μm (30 μ")
Insulators	Teflon	None
Crimp Ferrules	Annealed Brass	Gold 0.07μm (3 μ")

NOTE: Other materials and platings are available on request.

Mechanical & Environmental	
Engagement / Disengagement Force	62 N max.
Contact Retention	18 N min.
Durability(Mating)	500 cycles min.
Temperature Range	-65°C to +155°C
Vibration	MIL-STD-202 Method 204 Test Cond. B.
Salt Spray	MIL-STD-202 Method 101 Test Cond. B.
Thermal Shock	MIL-STD-202 Method 107 Test Cond. B.

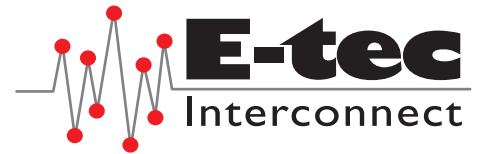
How to order

RF X - SB X - XX X 5 xx - 58

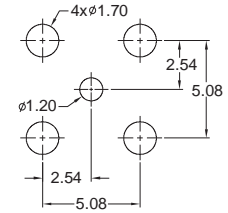
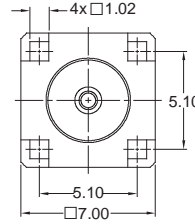
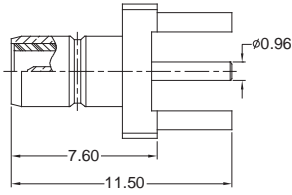


RF Connectors

SMB Series



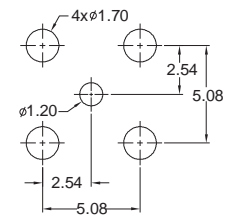
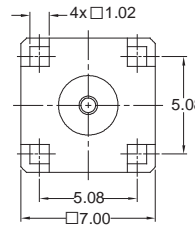
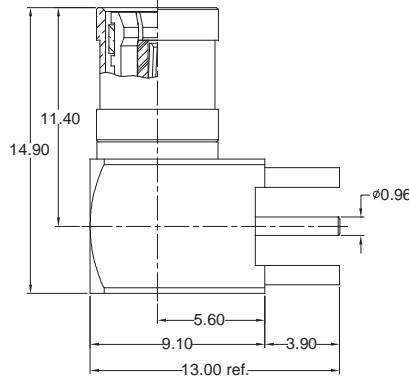
STRAIGHT THT JACK



PCB Hole Layout

Order Code
RFJ-SBS-B1N592-58

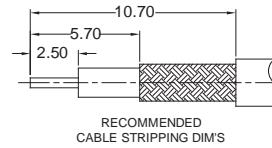
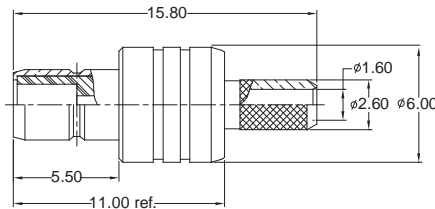
R/A THT PLUG



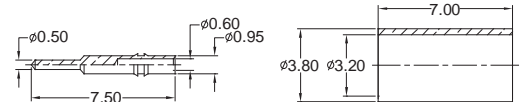
PCB Hole Layout

Order Code
RFP-SBR-B1N592-58

CRIMP JACK

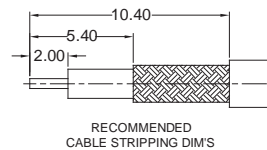
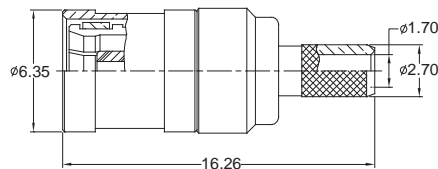


CABLE TYPES
RG-174/U, 188A/U, 316/U, LMR-100

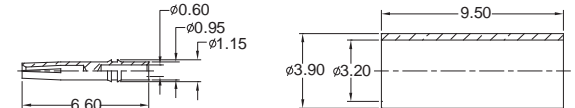


Order Code
RFJ-SBS-C1N502-58

CRIMP PLUG

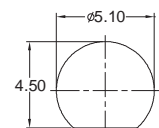
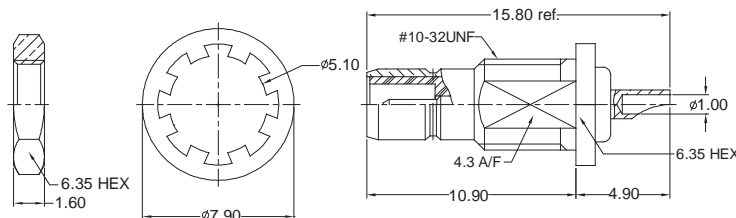


CABLE TYPES
RG-174/U, 188A/U, 316/U, LMR-100



Order Code
RFP-SBS-C1N502-58

PANEL JACK



RECOMMENDED MOUNTING HOLE

Order Code
RFJ-SBS-P1B591-58

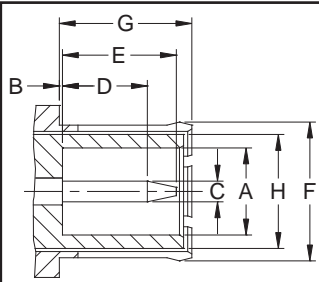
Other SMB types available on request

RF Connectors

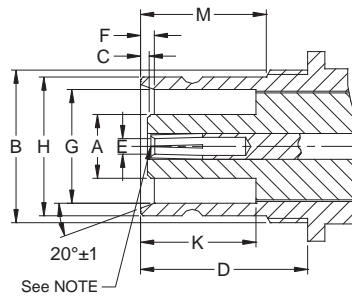
1.6/5.6 Series



1.6/5.6 coaxial connectors with 75Ω impedance are generally designed for radio and digital signal transmissions. These 1.6/5.6 connectors have become popular in modern telecommunication equipments.



Dimension	PLUG	
	Millimeters	
	Minimum	Maximum
A	4.00	--
B	--	0.15
C	0.97	1.03
D	3.90	4.30
E	--	5.50
F	Flared To Meet Good Electrical Contact	
G	6.40	6.60
H	5.60	



Dimension	JACK	
	Millimeters	
	Minimum	Maximum
A	--	3.80
B	M9*0.5	
C	0.25	--
D	9.70	--
F	0.90	1.10
G	6.60	6.69
H	8.10	8.25
K	6.70	--
M	7.00	7.50

PLUG

JACK

NOTE

In order to meet the VSWR and CR values as specified, the inner hole diameter needs to be mated with a 0.97/1.03mm dia. pin.

Electrical		
Impedance	75 Ω	
Frequency Range	0 - 1 GHz	
Working Voltage	335 V rms max.	
Dielectric Withstanding Voltage	1000 V rms min.	
VSWR	Straight	1.3 max.
	Right Angle	1.5 max.
Contact Resistance	Center Contact	4 mΩ max.
	Outer Contact	2 mΩ max.
Insulator Resistance	1000 MΩ min.	

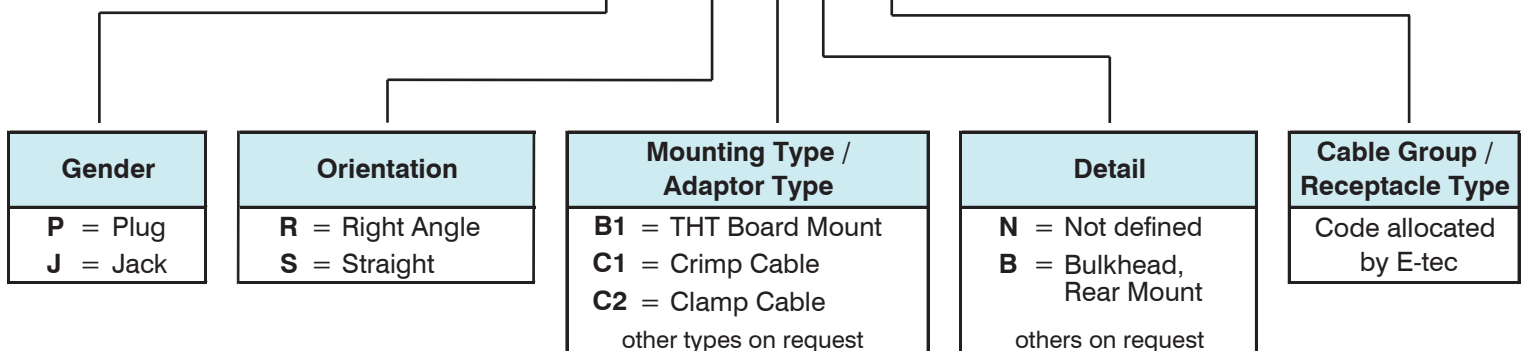
Material		
Parts Name	Material	Finish
Body, Metal Parts	Brass per QQ-B-626	Nickel 1.75μm (70 μ")
Outer Contact(Plug)	Phosphor Bronze per QQ-B-750	Gold 0.07μm (3 μ")
Center Contacts	Male: Brass per QQ-B-626	Gold 0.07μm (3 μ")
	Female: Beryllium copper per QQ-C-530	Gold 0.07μm (3 μ")
Insulators	Teflon	None
Crimp Ferrules	Annealed Brass	Nickel 1.75μm (70 μ")

NOTE: Other materials and platings are available on request.

Mechanical	
Engagement / Disengagement Force	27 N max.
Durability(Mating)	500 cycles min. (for Beryllium copper female contact only)

How to order

RF X - 16 X - XX X 7 xx - N5

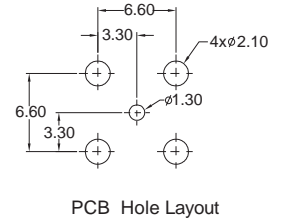
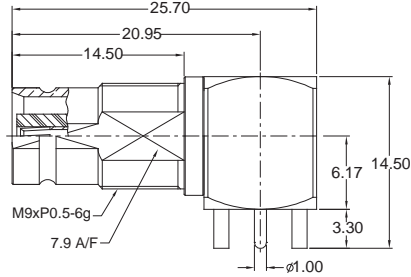
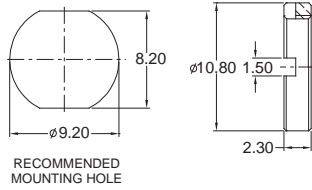


RF Connectors

1.6/5.6 Series

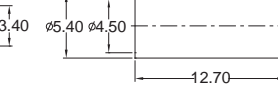
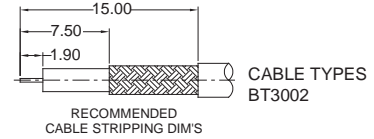
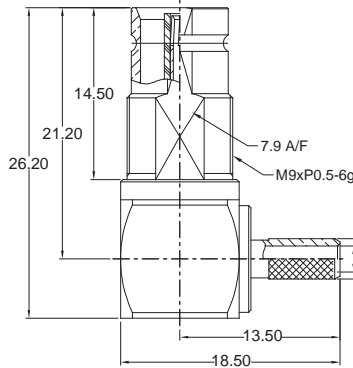
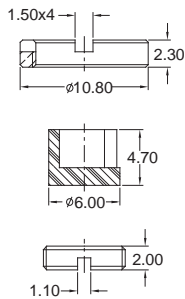


R/A THT JACK



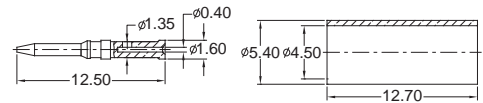
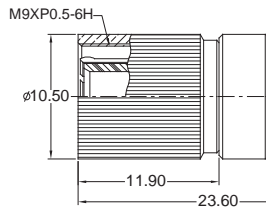
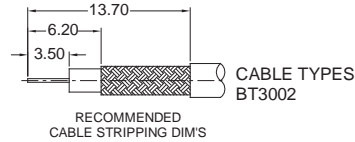
Order Code
RFJ-16R-B1B792-N5

R/A CRIMP JACK



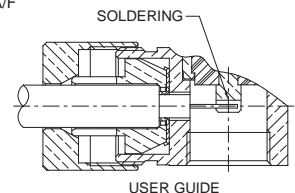
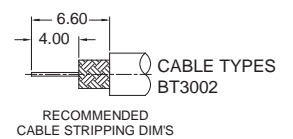
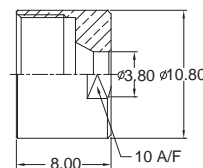
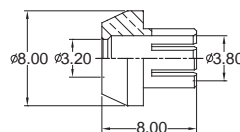
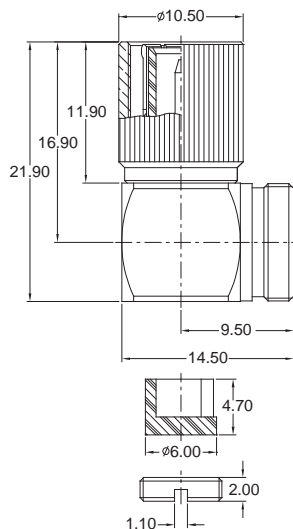
Order Code
RFJ-16R-C1B733-N5

CRIMP PLUG



Order Code
RFP-16S-C1N733-N5

R/A CLAMP PLUG



Order Code
RFP-16R-C2N733-N5

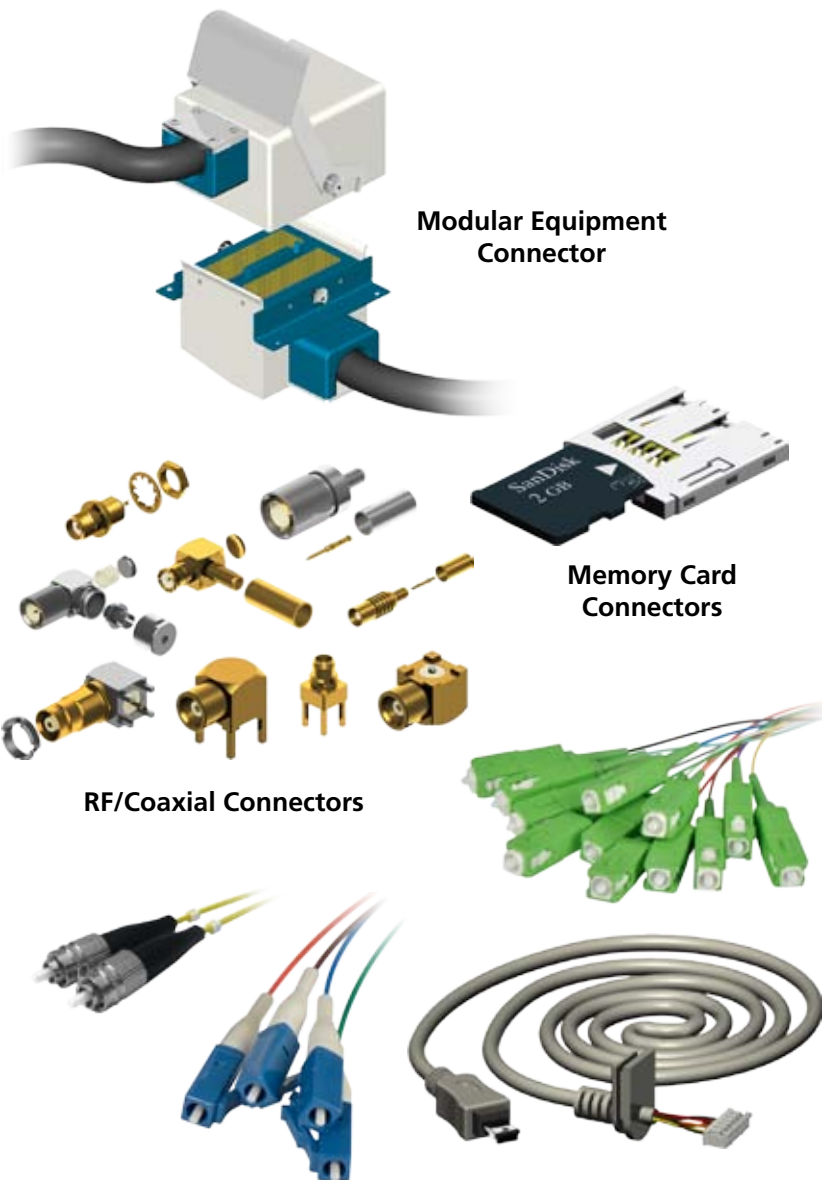
Other 1.6/5.6 types available on request

E-tec Company Profile

Since more than 40 years E-tec has been active in the electronics interconnection field (Test-Sockets, IC Sockets, PCB interconnect products, D-Sub's, Switches, RF Connectors, etc.) on a world-wide basis. E-tec offers a very comprehensive range of industry standard products as well as many customized products which can be found in a variety of application fields, such as aeronautics, military, medical, communications, automotive, multi-media and many others.

We offer very short delivery times from prototype small volume to large volume production series. Thanks to our own production facilities in Switzerland, Taiwan and China, we aim to offer a solution to all your problems. Quality assurance is an essential part of our production process, since our main objective is to offer products which correspond to the highest quality standards.

OTHER AVAILABLE PRODUCTS & CUSTOM PARTS



Modular Equipment Connector

Memory Card Connectors

RF/Coaxial Connectors

LAN Solutions and Custom Cable Assembly

International Sales Headquarters and Factory



Switzerland
Schweiz
Suisse
E-tec Interconnect AG
Friedhofstrasse 1
CH-2543 Lengnau b. Biel
Phone: +41 (0) 32 654 1550
Fax: +41 (0) 32 652 2693
E-mail: info@e-tec.com
www.e-tec.com

Factory



Taiwan
E-tec Interconnect Asia Ltd.
10-2F, No. 260, Section 2,
New Taipei Blvd., Sanchong Dist.
24158 New Taipei City TAIWAN
Phone: +886 / 22 999-27 26
Fax: +886 / 22 999-52 55
E-mail: info@e-tec-asia.com.tw
www.e-tec-asia.com.tw

Related Sales Headquarters

Deutschland
Germany
Allemagne
EMC electro mechanical components GmbH
PF. 1160
D-65510 Idstein
Phone: +49 / 6126 / 9395-0
Fax: +49 / 6126 / 9395-72
E-mail: info@emc.de
www.emc.de

England
Angleterre
E-tec Interconnect UK Ltd.
Units A5 & A6 Decimus Park
Kingstanding Way
Tunbridge Wells
Kent TN2 3GP
Phone: +44 / 1892 / 53 02 60
Fax: +44 / 1892 / 51 55 60
E-mail: info@e-tec.co.uk
www.e-tec.co.uk

USA/Canada
E-tec Interconnect USA Ltd,
Post Office Box 4078
Mountain View CA 94040
Phone: +1 408.746.2800
Fax: +1 408.519.6611
E-mail: info-us@e-tec.com
www.e-tec.com

France
Frankreich
Silfox SAS
Écopôle-ZAC Le Charme
245, avenue de Rio
F-77550 Moissy-Cramayel
Phone: +33 / 1 / 49 56 04 68
Fax: +33 / 1 / 49 56 02 87
E-mail: info@silfox.fr
www.silfox.fr